



Pentaho Aggregation Designer 1.0 User Guide

Contents

- Introduction 2
- Pentaho Aggregation Designer Overview 3
- Installing the Pentaho Aggregation Designer 4
- Copyright and Trademark Notice 5
 - Company Information 5
 - Limits of Liability and Disclaimer of Warranty 5
 - Trademarks 5
 - Copyright Notice 5
 - Contacting Pentaho 6

Introduction

This user's guide provides you with instructions for recommending and/or designing aggregate tables. The use of aggregate tables can dramatically improve the query performance of ROLAP solutions.

Assumptions

This document is written for Database Administrators and consultants who design specific aggregate tables or get recommendations for aggregate tables based on an intelligent adviser algorithm. It is assumed that you, the reader, have a strong understanding of database design and concepts (such as database modeling, SQL security, and performance), and are familiar with aggregate table concepts.

Finding out more about Pentaho Aggregation Designer

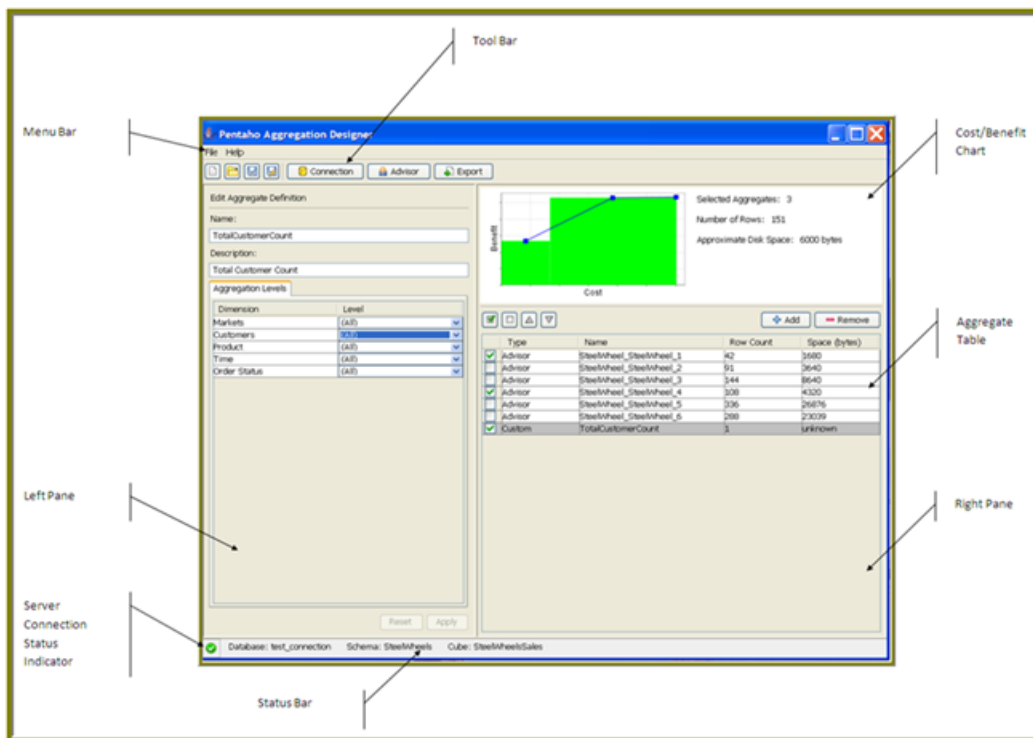
For more information about Pentaho Aggregation Designer Enterprise Edition, please click [here](#) to contact the Pentaho sales team.

Pentaho Aggregation Designer Overview

The Pentaho Aggregation Designer simplifies the creation and deployment of aggregate tables that improve the performance of your Pentaho Analysis (Mondrian) OLAP cubes. Pentaho Analysis is a pure, relational OLAP engine that works solely with the data stored in your relational database rather than providing its own multidimensional data storage model. This simplifies deployment and data management, but places limitations on performance when working with very large data sets (fact tables with more than 10 million records and/or cubes with a high cardinality of levels and members). To improve performance in these scenarios, Pentaho Analysis supports aggregate tables. Aggregate tables coexist with the base fact table and contain pre-aggregated measures built from the fact table. This improves performance by enabling the Mondrian engine to fulfill certain summary level queries from the smaller aggregate table versus aggregating a large number of individual facts from the base fact table.

The Pentaho Aggregation Designer provides you with a simple interface that allows you to create aggregate tables from levels within the dimensions you specify. Based on these selections, the Aggregation Designer generates the Data Definition Language (DDL) for creating the aggregate tables, the Data Manipulation Language (DML) for populating them, and an updated Mondrian schema which references the new aggregate tables. If you are unfamiliar with aggregate table design concepts, the Aggregation Designer also includes an intelligent adviser that evaluates the structure and cardinality of your OLAP cube and recommends some initial aggregate tables to create for improving performance.

The components of the Pentaho Aggregation Designer workspace are shown below:



Installing the Pentaho Aggregation Designer

This section provides you with information and instructions for installing and configuring the Pentaho Aggregation Designer.

System Requirements

The Pentaho Aggregation Designer requires Java SE runtime version 1.5 or later. Java versions earlier than Java 1.5 are not supported. Pentaho recommends that you have at least 1 Gigabyte of free physical memory. The Pentaho Aggregation Designer 1.0 supports Pentaho Open BI Suite versions 1.7 and higher.

Category	Minimum	Recommended
Disk	CPU	RAM
1 GB	1 GHz (single core)	1GB
10 GB	1.5 GHz + (multi-core)	2 GB

Refer to the table below for operating system support:

Windows	Linux
Windows 2003	Windows XP
Red Hat Enterprise Linux 5	SUSE Linux 10.1

Note: Other versions of the above-listed Linux distributions, and other distributions entirely, will probably work with the Pentaho Aggregation Designer 1.0; however, only the distributions listed here are tested by Pentaho.

Installation Instructions

The **pad-open-1.0-xx.zip** file contains all the libraries and script files necessary to run Pentaho Aggregation Designer. To install the Pentaho Aggregation Designer, unzip this file into a directory of your choice.

To launch the Aggregation Designer on Windows...

Run the **startaggregationdesigner.bat** script located in the root of your installation directory.

To launch the Aggregation Designer on Linux...

Run the **startaggregationdesigner.sh** script located in the root of your installation directory.

CAUTION: Place your JDBC driver JARs in the Drivers directory. Once in this directory, the drivers are added to the classpath automatically when the Pentaho Aggregation Designer starts.

Copyright and Trademark Notice

Company Information

Contact and corporate information.

Pentaho's physical and mailing address is:

Pentaho Corporation
Citadel International, Suite 340
5950 Hazeltine National Drive
Orlando, FL 32822

Phone: +1 407 812-OPEN (6736)

Fax: +1 407 517-4575

Web site: <http://www.pentaho.com>

Sales Inquiries: sales@pentaho.com

Support: support@pentaho.com

Documentation Suggestions: documentation@pentaho.com

Sign-up for our newsletter: <http://community.pentaho.com/newsletter/>

Limits of Liability and Disclaimer of Warranty

Explanation of Pentaho's liability and warranty for this guide.

The author(s) of this document have used their best efforts in preparing the content and the programs contained in it. These efforts include the development, research, and testing of the theories and programs to determine their effectiveness. The author(s) and publisher make no warranty of any kind, express or implied, with regard to these programs or the documentation contained in this guide.

The author(s) and Pentaho shall not be liable in the event of incidental or consequential damages in connection with, or arising out of, the furnishing, performance, or use of the programs, associated instructions, and/or claims.

Trademarks

Trademark usage in Pentaho documentation.

Trademarked names may appear throughout this document. Rather than list the names and entities that own the trademarks or insert a trademark symbol with each mention of the trademarked name, Pentaho states that it is using the names for editorial purposes only and to the benefit of the trademark owner, with no intention of infringing upon that trademark.

Copyright Notice

Pentaho copyright notice.

Copyright © 2008 Pentaho Corporation. No part of this document may be reprinted without written permission from Pentaho Corporation. All trademarks are the property of their respective owners.

Contacting Pentaho

How to improve this document.

If you have questions that are not covered in this guide, or if you find errors in the instructions or language, please contact the Pentaho Technical Publications team at documentation@pentaho.com. **The Publications team cannot help you resolve technical issues with products.**

Support-related questions should be submitted through the Pentaho Customer Support Portal at <http://support.pentaho.com>.

For information about how to purchase support or enable an additional named support contact with an existing subscription, please contact your sales representative, or send an email to sales@pentaho.com.

For information about instructor-led training on the topics covered in this guide, visit <http://www.pentaho.com/training>.